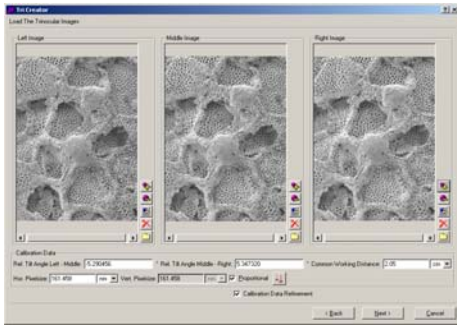


Alicona Application Notes:

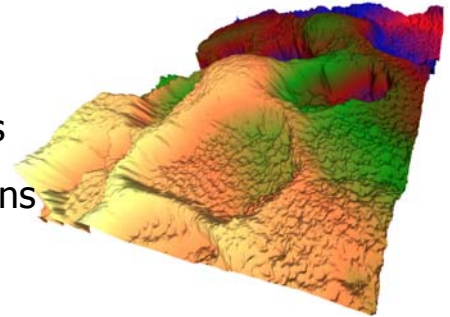
TriCreator; A quantitative method for 3D S.E.M. imaging



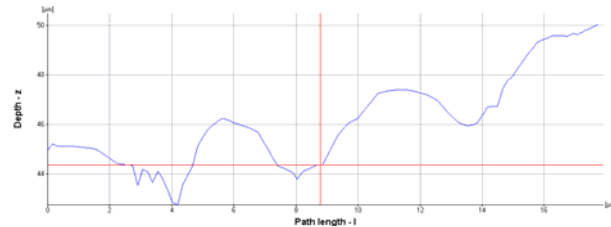
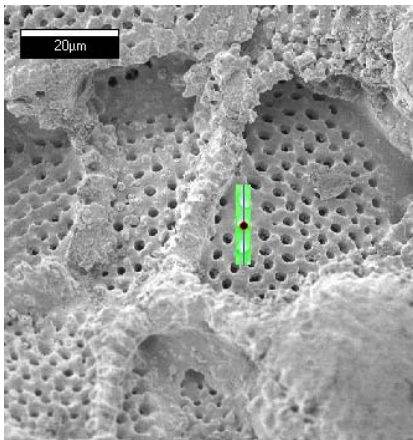
Utilizing triangulation algorithms similar to those found in Global Positioning Systems (GPS) the Alicona software is able to reconstruct and determine surface elevations from three separately-captured S.E.M. images. With simple input of known information the user can create a new realm in electron microscopy not previously known wherein quantitative information pertaining to surface profile, area and volume can be easily extracted and displayed. The software is designed to operate outside the S.E.M. controller thereby making it adaptable to virtually any S.E.M. Database.

„We make the invisible visible“

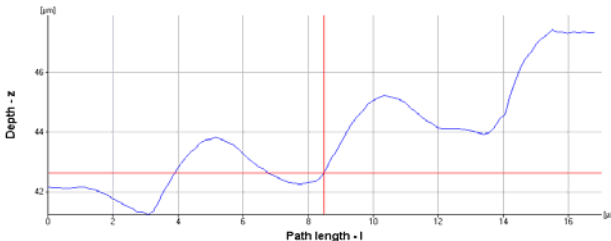
- Automated determination of calibration data
- Quantitative profile, area, and volumetric calculations
- Use of 3 images substantially enhances reconstructions



Sample Screenshots



StereoCreator



TriCreator